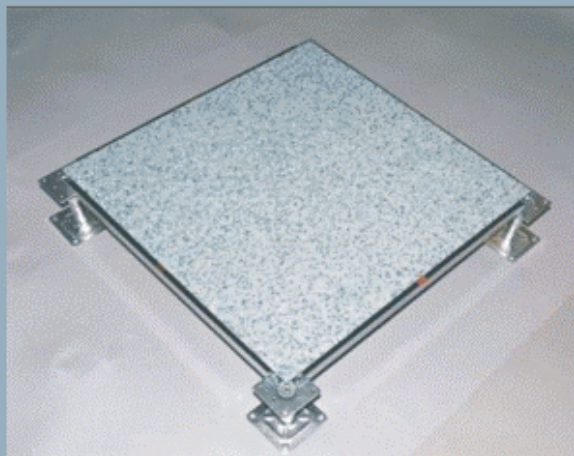


STACO[®]

Static Control Flooring System



AN45 series
Conventional series
Understructure systems

Power / Data
Zone power
Actile

anti-static resilient access floor
steel cementitious access floor
pedestal / stringer
non zinc whisker plating
service floor box series
ZoneEx systems
anti-static vinyl tile

www.**NETFLOR**.biz

STACO AN45 is a durable, resilient, and aesthetic access floor system other than those conventional. The factory applied floor tile bonding on conventional access floor panel commonly available in the market are 2 mm thick vinyl tile, or HPL, plus black trimmers at 4 sides. The black vinyl trimmers may be losing few years later. In addition, from aesthetics viewpoint, the black trimmers sealed at four sides of each panel are generally looked systematic and unpleasant.

Features -- AN45 series

- Aesthetics - uniform finish, no trimmers at four sides of access panel:
Full piece anti-static vinyl tile (Actile) bonded one-to-one alignment on access panel. The 4.5 mm thick Actile is rigid at tile borders. No extra protection at borders are needed. Panels are inter-changeable, providing uniform looking, also for un-restricted color coordination and matching.
- Anti-static:
Vinyl tile (Actile) static dissipative at 106 ~ 109 ohm.
Higher static control performance than carpet tile, regular PVC, and HPL surface.
- Resilient: surface 4.5 mm thick vinyl tile (Actile).
comfortable walking and noise control.
- Hard-wearing: Pure vinyl wear-layer 1.0 mm thick, much more durable than HPL.
- Choice of energized colors: 8 standard colors.
- Stain resistance: uv coating, glossy surface.
Maintenance procedure is easy. Rinse with clean water, waxing by water-base wax.
- Non-combustible: steel cementitious panel, full steel pedestals and bolted stringers.



Applications

Systems for light to heavy traffic -- office, bank, factory, school, library, and all public or institutional interiors.



AN45 installed in bank corporate headquarter where require uniform color image, without black vinyl trimmers.

The system

An anti-static resilient access floor consists of **AN45** panel and understructure system.

modular size: 600 mm X 600 mm

system height: 100 mm ~ 1200 mm

understructure: pedestal system with bolted stringer

Anti-stain treatment: UV coating

AN45 panel consists of **Actile** and access panel

Surface: **Actile** one-to-one alignment bonded on access panel.

No trimmers are required at four sides of the tile.

Access Panel: cement in-filled steel panel of required loading property, concentrate load ranging 800 LB ~ 2000 LB.

Size: 599.6 mm X 599.6 mm

Actile: anti-static vinyl tile.

Total thickness: 4.5 mm.

Wear Layer: 1.0 mm thick homogeneous vinyl.

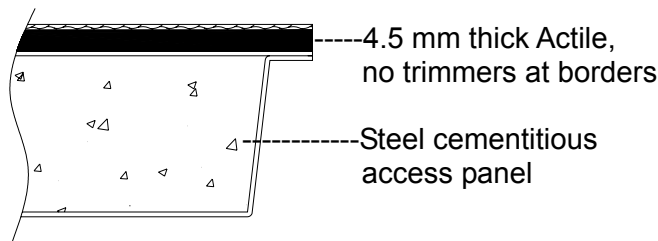
Backing: 3.5 mm thick PVC back.

(for details of **Actile**, please see page 9)

size: 600 mm X 600 mm



AN45 panel – cross section



Stringer

Rectangular tube steel by zinc plating.

Shock-absorption PVC stripe taped on top. Eliminate noise and prevent air leakage.

Pedestals

Full steel pedestal system, corrosion protection by zinc plating.

Pedestal system to support standard finish floor height (FFH) 100 mm ~ 1200 mm.

(page 5 Understructure)

Main Specifications

Panel size: 600 mm X 600 mm

System	Vinyl tile thickness	Anti-static wear-layer	Static propensity	Concentration load -- access panel	Concentrate ultimate load	System weight per sq. meter
AN45-800	4.5 mm	1.0 mm	$10^6 \sim 10^9 \Omega$	800 LB (3.56 KN)	>2200 LB	avg. 50 kg / m ²
AN45-1000	4.5 mm	1.0 mm	$10^6 \sim 10^9 \Omega$	1000 LB (4.45 KN)	>2750 LB	avg. 53 kg / m ²
AN45-1250	4.5 mm	1.0 mm	$10^6 \sim 10^9 \Omega$	1250 LB (5.56 KN)	>3437 LB	avg. 56 kg / m ²
AN45-1500	4.5 mm	1.0 mm	$10^6 \sim 10^9 \Omega$	1500 LB (6.68 KN)	>4125 LB	avg. 59 kg / m ²
AN45-2000	4.5 mm	1.0 mm	$10^6 \sim 10^9 \Omega$	2000 LB (8.90 KN)	>5550 LB	avg.62 kg / m ²

Steel cementitious access floor has been developing since early stage of access floor industry. We provide high quality full range products meeting loading property requirements from light to heavy traffic.

System description

Modular size - access panel: 600 mm X 600 mm

FFH (finish floor height):

Corner Lock installation: 100 mm ~ 800 mm

Bolted Stringer installation: 100 mm ~ 1200 mm

Features

- Non-combustible
- Cementitious core, walking like solid floor
- Excellent loading property for heavy traffic
- 100% exchangeable access panel
- Moisture resistance, better performance than woodcore
- Top finished by all major type floor coverings - carpet tile, vinyl tile, HPL
- Comply to electricity, data and voice outlet boxes, and HVAC Under-Floor Air Conditioning.
- Full compliance with CISCA and all other internationally accepted standards.

Applications

Suitable for all commercial and institutional interiors – office, bank, factory, school, library, casino, hotel, and all public interiors.

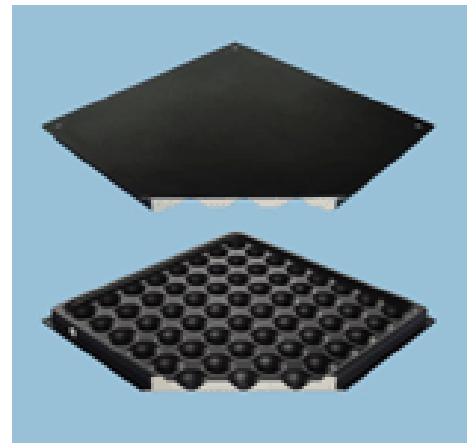
Access Panel

Welded form steel access panel, in-filled with light-weight cement, corrosion protection by powder coating.

Access panels are available in complete loading property range. Concentrate load rates from 800 LB to 2,000 LB, for light, medium, to heavy traffic.

Access panel main specifications

STACO systems	Panel Size (mm)	Concentrate load		Concentrate ultimate load	
		LB	KN	LB	KN
FS-800	600 X 600 X 32	> 800	> 3.56	> 2200	> 9.80
FS-1000	600 X 600 X 35	> 1000	> 4.45	> 2750	> 12.25
FS-1250		> 1250	> 5.56	> 3437	> 15.31
FS-1500		> 1500	> 6.68	> 4125	> 18.37
FS-2000		> 2000	> 8.90	> 5550	> 24.72



Types of finish

Access panels supplying to job site by bare finish, and factory bonded vinyl or HPL finish.

A. Bare panel

Bare panel installed by corner lock installation method, Floor coverings are installed at job site after completion of access floor installation. Commercial rate floor tiles such as carpet tile, vinyl, and rubber tile are standard floor coverings. Floor tiles are loose-laid, or bonded by releasable adhesives. Vinyl tiles are recommended anti-static, pure PVC wear layer no less than 0.7 mm, and total thickness no less than 4 mm.



bare panel

B. Factory-bond finish access panel

1. **Vinyl tile access panel:** 2 mm thick homogeneous vinyl tile, four sides sealed by vinyl trimmer as protection.
2. **Conductive vinyl tile access panel:** 2 mm or 3 mm thick homogenous conductive vinyl tile, four sides sealed by conductive vinyl trimmer as protection
3. **HPL finish:**
1.2 m thick HPL, four sides sealed by vinyl trimmers as protection.

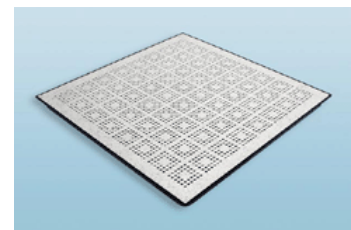


vinyl finish panel



HPL finish panel

- C. **perforated panel:** for under-floor air distribution
Factory bonded perforated access panel for under-floor air distribution at required air-flow ratio.
Air-flow ratio: 20%, 35%, 40%
Finishing: available in HPL and vinyl, four sides sealed by vinyl trimmers as protection.
Concentrate load: 800, 1000, 1,250 LB



perforated panel

Understructure

Understructure system to support access panel

- (1) Access panel corner-locked on pedestal without stringer.
- (2) Bolted stringer and pedestal, lay-in access panel.

Corrosion protection: STACO understructure systems are made of full steel, corrosion protection by zinc plating minimum 5 micron.

Corner-lock pedestal for bare panel

Pedestal: consisted of headset, pedestal pipe and base.

Height: available in different heights to support finish floor height (FFH) from 100 mm to 800 mm high. Each pedestal allow $\pm 20 \sim 25$ mm height adjustment.



PERFORMANCE SELECTION CHART Corner Lock Pedestal for Bare Panel					
Pedestal No.	Finish floor height (mm)	Vertical load	Headset (mm)	Pedestal pipe	Pedestal base (mm)
CL-PDT 100 ~250	100 ~ 250 ± 20	18 kN	75 x 75	\varnothing 20 mm 1.2 mm thick	100 x 100 2.5 mm thick
CL-PDT 300 ~ 450	300 ~450 ± 25	18 kN	75 x 75	\varnothing 24 mm 1.2 mm thick	100 x 100 2.5 mm thick
CL-PDT 500 ~ 800	500 \pm 800 ± 25	18 kN	85 x 85	\varnothing 31 mm 2.0 mm thick	125 x 125 3.0 mm thick

Bolted stringer and pedestal for lay-in panel

Stringer: square steel tube, pre-punched holes at two ends, for fastening at top of pedestal headset, automatically form a grid-pattern.

Shock absorption

PVC strip taped on top of stringer, to provide shock absorption and noise dampness

Height: Pedestals are available in different heights to support finish floor height (FFH) from 100 mm to 1200 mm.

Each pedestal allows $\pm 20 \sim 25$ mm height adjustment.



PERFORMANCE SELECTION CHART Bolted Stringer & Pedestal for Access Panel					
Pedestal No.	Pedestal height (mm)	Vertical load	Headset (mm)	Pedestal pipe	Pedestal base (mm)
BS-PDT 100 ~ 400	80 ~ 400 ± 20	18 kN	75 x 75	\varnothing 24 mm 1.2 mm thick	100 x 100 2.5 mm thick
BS-PDT 450 ~ 800	450 ~ 800 ± 25	18 kN	75 x 75	\varnothing 31 mm 2.0 mm thick	100 x 100 3.0 mm thick
BS-PDT 850 ~ 1200	850 ~ 1200 ± 25	18 kN	85 x 85	\varnothing 38 mm 2.0 mm thick	125 x 125 3.0 mm thick

Non Zinc Whisker Plating understructure

Non Zinc Whisker plating on access floor understructure requires special technique and facilities. Plating methods are conducting under special procedures.

Why?

Non zinc whisker plating applied on understructure pedestal and stringer systems are required to prevent unexplained short circuits plaguing in high sophisticated electronics equipments, servers, computers, and etc.

Performance: Special plating process, meeting requirements of growing no whisker under 200 hours salt mist aging test.

Applications

As understructure for aluminum, steel access panel, and other type special access floor system which requires non zinc whisker occurred at access floor understructure for projects in bank, data center, control room, hi-tech factory.



custom-made non zinc whisker plating pedestal, at specified height and thickness

Pipe height: up to 1200 mm

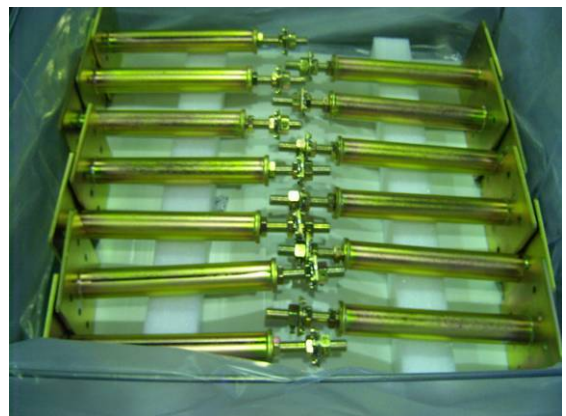
Pipe diameter and thickness: per architectural specifications

Headset thickness: per architect specifications

Base plate thickness: up to 9 mm



particle control clean packing



special size non zinc whisker plating pedestals (900 mm high) ready for shipment to Soft Bank Japan control center building

Service Box

We supply quality floor box systems for world market, accommodating all types of power socket in EC, U.K, Middle East, USA.

SB75

SB75 floor box consists of poly-carbonate mounting lid and galvanized steel base, 3 compartments, for access floor finish floor height 75 mm.

Capacity:

2 compartment for power sockets:

SS75-BS: 2 twin sockets for 4 plugs. 13A, 240 V

SS75-EC: 2 twin sockets for 4 plugs. 15A, 240 V

1 compartment for minimum 4 data/voice jack

Mounting lid: Molded poly-carbonate tray with frame, reinforced with 3 mm galvanized steel at middle, recess 6.5 mm at field area for topping by carpet tile.



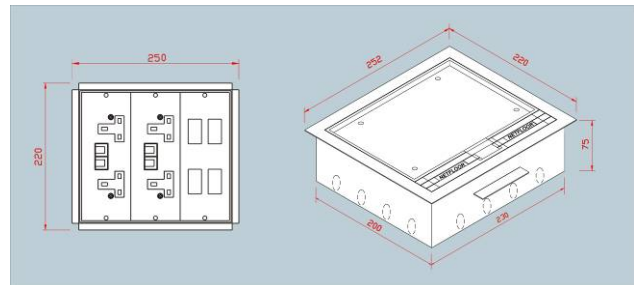
3 compartments
4 sockets & 4 data jacks

Box base: size 230 mm X 200 mm
Box base and compartments for sockets and data jack: made of galvanized steel by powder coating.

Dimensions details for all base trays

** Access panel cut out: 232 mm X 202 mm

** Carpet tile cut size for topping floor box:
210 mm X 146 mm



SS60

SS60 floor box consists of stainless steel mounting lid and galvanized steel base, 3 compartments, for access floor finish floor height 60 mm.

2 compartments for sockets: 2 twin sockets for 4 plugs. 13A, 240V

1 component for data/voice jack

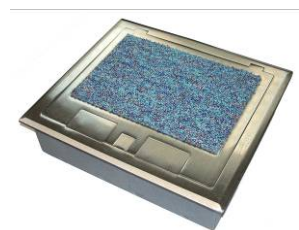
Overall dimension: 252 mm X 220 mm

Height: for access floor finish floor height 60 mm and greater

Mounting lid: stainless steel tray, middle with recess 6.5 mm for topping by carpet tile.

Box base: size 230 mm X 200 mm

Box base and compartments for sockets and data jack: made of galvanized steel by powder coating.



Options for socket system other than BS type

Factory assembled all types of receptacle compartment to affix sockets of all major EC countries.

FFH 75 mm (plastics lid)

FFH 60 mm (stainless steel lid)

Power compartments are easily convert to sockets of Germany, French, or other socket types, or combination.



Accommodate all type sockets in EC and U.K.

ZoneEx - zone power system under access floor

ZoneEx is an innovative power distribution system to accommodate all types of access floor systems, for least job site labors, no cutting/sheathing and no waste installation at job site.

1. Instant connection, fast installation

All components deliver to job site are ready for instant connection and extension.

2. Environment friendly: No cutting at job site, no wastage, 100% re-usable

ZoneEx Plan: electric panel ► 5-pole extension cable ► Zone Box ► 3-pole extension cable ► service floor boxes / end user electric/electronic facilities

1. Starts from electric panel

The modularized ZoneEx plan starts from the electric panel at each floor of a building.



A. **5-pole starting cables (power socket) connecting at electric panel. Each starting cable extend and serves one Zone Box individually.**

B. **5-pole extension cable (plug & socket) to Zone Box: standard length 12, 8, 3 meters, connecting extend to Zone Box.**

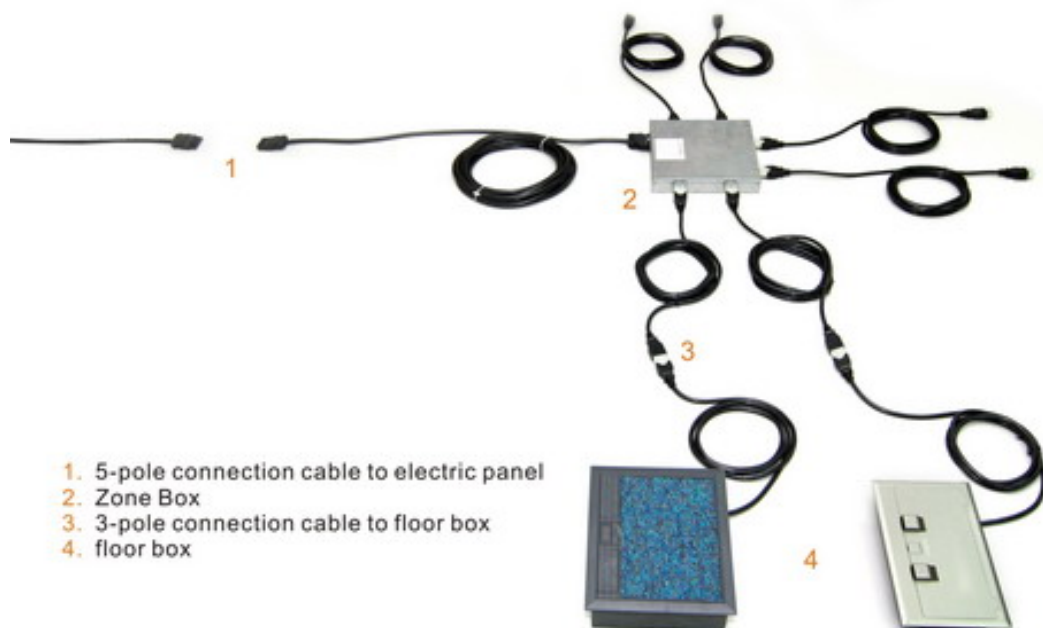
2. Zone Box to floor box: one 5-pole built-in plug receiving power from 5-pole extension cable, six built-in 3-pole sockets for connection by 3-pole extension cables, or direct connection by floor boxes with 3-pole connection cord.

Each Zone Box has six 3-pole sockets, to accommodate 6 floor boxes

Each floor box: has 4 sockets, normally to serve 1 workstation. Based on 1 floor box serves 1 workstations, 1 Zone Box will be capable to serve 6 workstations.

ZoneEx components – all factory assembled: (1) 5-pole starting cable (2) 5-pole extension cable (3) Zone Box (4) 3-pole extension cable (5) floor box with extension cord.

All components are factory assembled, no cutting or sheathing at job site:



----- For detail information of ZoneEx, please visit www.zoneex.biz -----

Actile -- Anti-Static Vinyl Tile

600 mm x 600 mm x 4.5 mm

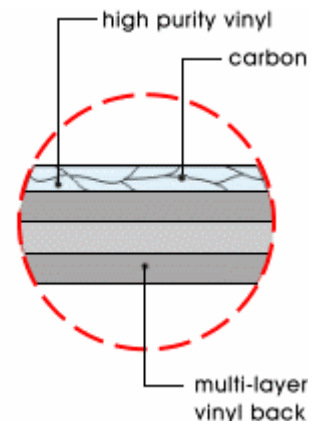
ideal flooring solution better than carpet tile

Actile is an ideal resilient flooring for the modern interiors. Electrostatic propensity of the tile is less than 0.6 kV. The has effectively eliminated the static irritation in the network office as well as in institutional public interiors. The tile consists of wear-layer and backing

Wear-layer: high durability pure PVC with inlaid carbon

Anti-stain treatment: UV coating

Backing: cross-section construction 3 layers, enhance dimensional stability of the tile.

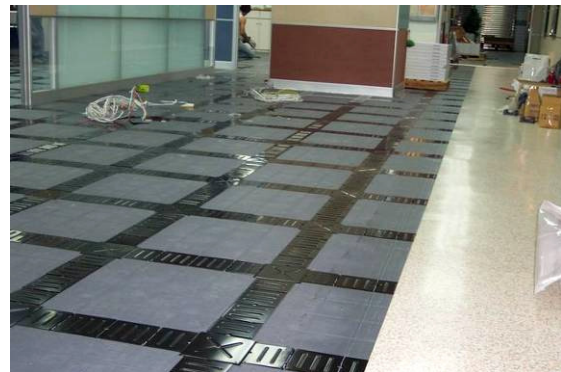


Applications ---

1. As surface Flooring for Access Floors

Actile provides releasable solution same as carpet tile. In addition, **Actile** features with high durability, anti-static, and easy clean which regular commercial carpet tile can not match.

1.1 Apply on Access Floor



Actile to install on access floor before or after cable routing.

1.2 On corner-lock bare finish access floor: same application as 1.1

1.3 Factory one-to-one alignment bonding to access floor panel: AN45 system (page 1,2).



Single color installation, monolithic atmosphere in bank call center



Standard 8 color for color matching

2. Renovation on access floors old access floor surface maintenance

2.1 To replace old carpet tile on access floor with cable trench:

When carpet tiles are dirty and/or start generating statics, **Actile** is correct replacement.

- Easy steps:**
- remove the old carpet tile. Clean access floor surface
 - brush old access floor surface with **releasable adhesive**, or apply **double-side tape**.
 - Install **Actile** same procedure as for regular vinyl tile installation.

Case A: renovation in a bank's credit card center (Actile on old OA Floor)



Remove old carpet tiles.
Brushing releasable adhesive.



Install **Actile** on access floor same procedure as PVC tile.



Quick renovation
anti-static and easy clean



2.2 Renovation on corner-lock access floor

Easy steps:

- Remove old carpet tile
- Install **Actile** with double-side tape 180 or 120 cm o.c.
- Entrance, border, aisle: generally applying releasable adhesive or 60 cm o.c. double-side tapes under tiles' joints

2.3 Renovation on HPL Access Floor

Case B: Renovation in a multi-nation bank in H.K.

Access Floor: wood core HPL access floor panel installed a few years ago. But the HPL surface getting scratched shortly after installation. And few trimmers started losing.

First time renovation: carpet tiles were installed over all HPL panel. Again, carpet tiles got dirty quickly in few years. Other problem was statics started bothering the employee.

Workable solution this time: Now, **Actile** is the solution. The management decided to remove carpet tile, and install **Actile** on the HPL access floor.



- Renovation at aisle:** Install **Actile**, double-side tape 60 cm o.c. under **Actile**'s joints.
- Renovation in office:** Install **Actile**, double-side tape 180 ~ 120 cm o.c. under **Actile**.

Performance chart – Actile

Size (cm)	Total thickness	wear-layer thickness	PVC back thickness	Static resistance	Taber Wear test - loss	Fire index	Chemical resistance
60 x 60	4.5 mm	1.0 mm	35 mm	10 ⁶ ~ 10 ⁹ Ω	<0.01 mm	Class 1	No change

STACO[®]

Static Control Flooring Systems



Meeting room door hinge installed on AN45 panel

[serve all modern interiors](#)

- School
- Bank
- Library
- Control room
- General office
- Factory / factory office
- Museum
- Hospital / clinic

Quality Assurance: All Netfloor product lines quality assured and 5 years limited warranty.

Maintenance

Anti-static vinyl tile: Maintain in accordance with conductive floor procedure. Clean the dirt, rinse with clean water. Do not use oil-base wax. Water base wax is applicable.

Patent granted -- Actile

China: Utility Model No. 200320124457.0

Taiwan: Invention Patent No. M247627

In pursuing quality improvement, the manufacturer reserves the right to vary specifications without prior notice.



www.net-floor.biz



A product division of Netfloor, Inc.
copyright Netfloor, Inc.

Nov. 2008