

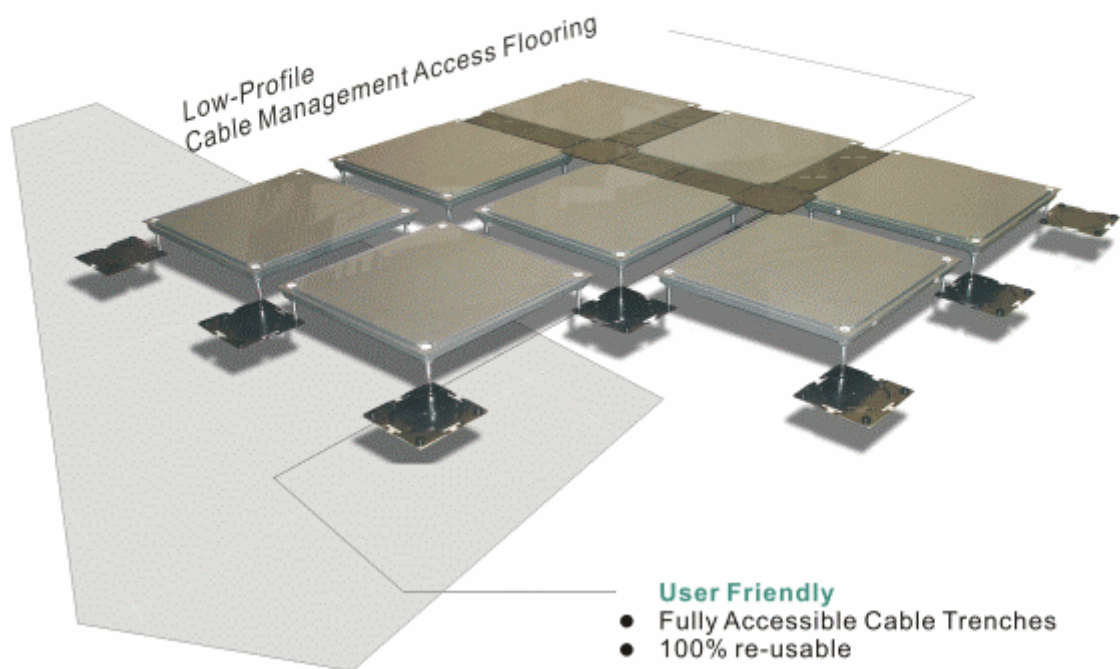


www.net-floor.biz

CamassCrete

CS1000A series

Low-Profile: FFH 76 ~150 mm
Super Low-Profile: FFH 40/50/60 mm



User Friendly

- Fully Accessible Cable Trenches
- 100% re-usable

CamassCrete CS1000A

CS1000A system is an improvement of CamassCrete product line. The advanced version increases stability and security by newly designed Flank Caps, to lock on the grooves at four sides of UniPanel (main panel). The patented Cable Trench system, a continuous grid-form cable trenches throughout the floor plan, provides free accessibility to users and maximum capacity for network's cable distribution and extension. The unique invention [Socket-Set-Screw](#) system contributes super-low installation at FFH (finish floor height) from 60 mm down to 40 mm, which provides cable trench clearance at 55 mm ~ 35 mm. As to structure, the system retains steel-cementitious access floor's fundamental functions such as high concentration load, and high rolling load property.

Users Friendly

Reticulated Cable Trench System: Grid-form Cable Trench system provides cable runway inside width 11 cm (4.33") within every 60 cm. The trench caps are easily lifted and accessible by access floor installers, network technicians, and office users.

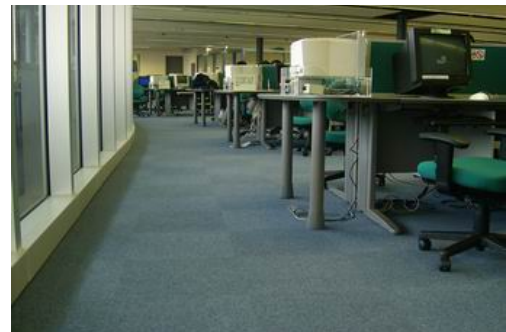
Low-Profile, conserve ceiling height: The unique Socket-Set Screw system enables installation height low to 4 cm ~ 6 cm (1.57" ~ 2.36") while still facilitate high cable capacity running inside the Cable Trenches.

Stability: The self-stand [UniPanels](#) (main panel) is structured with 4 pedestals at four corner of the panel. The UniPanels, with four built-in pedestals, are standing independently. In the event of earthquake or unusual strong impact, the system will not be collapsed.

Safety, No hazard: During re-routing or re-location, the technicians or office users just lift the Cable Trench caps by hand, or by regular screwdriver. If the site was installed with traditional access floor, the user has to use special tool, such as panel lifter, to lift the panel. Each steel cementitious structured access panel is normally weighted 12 to 15 kg (26 to 33 lb) per piece and it is not safe to operate by office people and may cause hazard.

Infinite flexibility and cost effectively

- **Easy routing and extension** of cables: Through Cable Trenches, power, data and voice cables, or even facility pipes are organized distributed and extended.
- **Extension** of cables to any point of furniture, partition, and workstation is unlimited.
- **Maintenance costs** can be neglected
- **Pedestals are not glued to the ground.** Removal of pedestals will not damage the ground. In the event of re-location, all components are re-usable.



Self-stand UniPanel (main panel) connecting by Base Connector to form the Cable Trenches.
The Base Connectors and Pedestals are not glued to the sub-floor and not causing damage to the sub-floor.



The System --- CamassCrete CS1000A

CamassCrete is composed of 4 main components: UniPanel (main panel), Base Connector, Central Cap and Flank Cap.

Module set: 600 mm x 600 mm (23.62" x 23.62") per module set. Each module set includes 1 UniPanel, 1 Base Connector, 1 Central Cap and 4 Flank Caps
UniPanel (main panel): Size 510 mm x 510 mm (20.07" sq.) Steel in-filled with light weight cement, powder coating. Four grooves at side of the panel to secure locking by Flank Cap. Factory assembled pedestals fixed at four corners of the panel. Due to the four built-in pedestals, UniPanel is self-stand and extraordinary stable and safety.

Base Connector: To connect UniPanels's pedestals, and automatically forms the standard-distance Cable Trenches.

Central Cap: To install on intersection of Cable Trenches.

Flank Cap: To install on Cable Trenches. Bent at side of cap form L-shape flange which enable securely locking at grooves of the UniPanel.

Interlocking System: To install, use Base Connector to connect UniPanel's pedestal. Connecting the UniPanels is easy, with no gluing, nailing or drilling required. Continuous connection of UniPanels, standard-distance grid-form Cable Trenches formed automatically.

Grid-form Cable Trench Systems

The reticulated grid-form cable trench system provide large cable capacity and easy routing while retains maximum ceiling height for the indoor environment.. The inside cable capacity is 11 cm within every 60 cm horizontally and vertically.

Specialist of Low-Profile installation

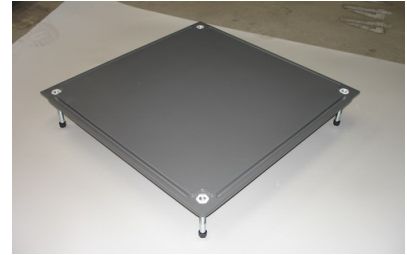
There are two height sections:

Low-Profile:

installation height from 76 mm (3")~150 mm (6").

Super Low-Profile:

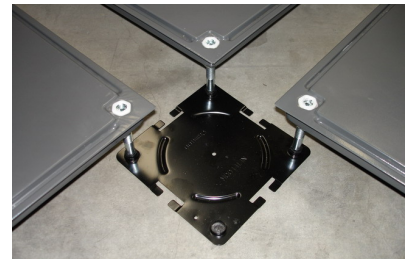
installation height at 40 mm ~ 60 mm (1.57" ~ 2.36")



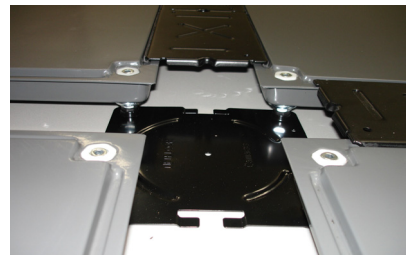
UniPanel with 4 built-in Pedestals



Base Connector Central Cap Flank Cap

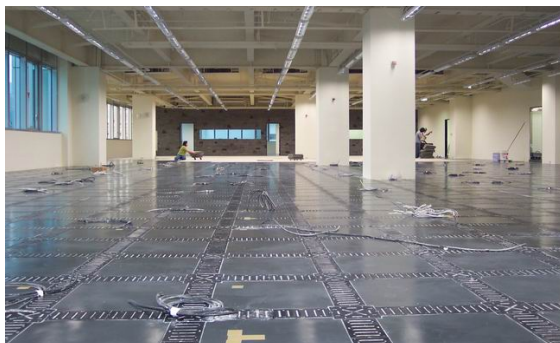


Base Connector connects pedestals forming low-profile 76~150 mm



forming supper low-profile 40~60 mm

During installation ...corporate headquarter



Cables routing inside the Cable Trenches and extending through any point of the interiors

After installation



CamassCrete facilitates neat, efficient environment. Unlimited cable highway networked underneath.



CamassCrete

CS1000A

I. CamassCrete Low-Profile

76 mm ~ 150 mm height

CS1000A-76 / CS1000A-100 / CS1000A-150 series

Cable Trench Capacity by different heights

Inside width: 110 mm (4.33")

Clearance: System height minus 5 mm

System	System height	Cable Trench width	Cable Trench clearance
CS1000A-76	76 mm (3.0")	110 mm (4.33")	71 mm (2.79")
CS1000A-100	100 mm (4.0")	110 mm (4.33")	95 mm (3.74")
CS1000A-150	150 mm (6.0")	110 mm (4.33")	145 mm (5.70")

Height adjustment: Self-stand UniPanel

Where there is floor deviation, impact noise might be caused by tip of pedestals. Adjust the pedestals to eliminate noise and deviations.

Step 1: Loose the lock-nut

Apply the 17 mm wrench to loose the lock-nut at bottom of the pedestal by counter-clockwise.

Step 2: Adjust height

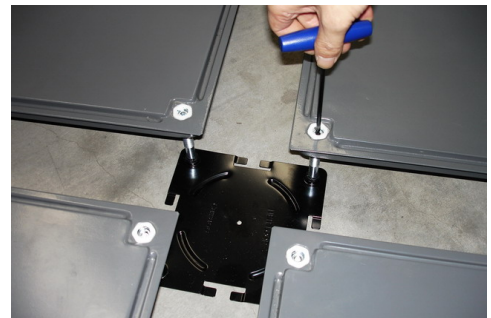
Apply the 4 mm hex key-wrench, stretch at the hex hole at top of the pedestal, to adjust.

Step 3: To fasten

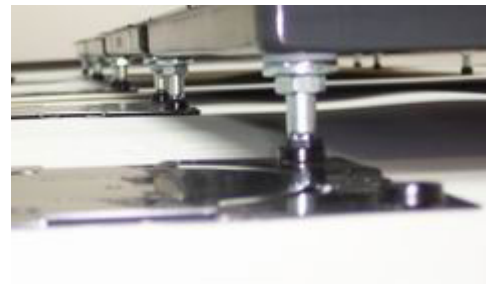
Use the 17 mm wrench again, to fasten the lock-nut by clockwise.



Provide maximum cable capacity and systematic cable routing, extension and connection. CamassCrete is ideal for corporate headquarter, general office, school, library, public and private training institutes



Step 2
Adjust height from top by key wrench



Step 1 and 3: loose and fasten the pedestal at the lock-nut at bottom



4 mm hex key wrench + 17 mm wrench



CamassCrete

CS1000A

II. CamassCrete Super Low-Profile

40 mm / 50 mm / 60 mm H

Super-Low Cable Highway ----- Can only be built by **Netfloor Systems**

CS1000A-40 / CS1000A-50 / CS1000A-60 series

Cable Trench Capacity by different heights

Inside width: 110 mm (4.33")

Clearance: System height minus 5 mm

System	System height	Cable Trench width	Cable Trench clearance
CS1000A-40	40 mm (1.57")	110 mm (4.33")	35 mm (1.37")
CS1000A-50	50 mm (2.0")	110 mm (4.33")	45 mm (1.77")
CS1000A-60	60 mm (2.36")	110 mm (4.33")	55 mm (2.16")



Socket-Set-Crew fixed at top of the pedestal

Set-Screw Locking System --- for Super Low-Profile installation

Step 1: To loose

Apply the 5 mm hex key-wrench to loose the **Set-Screw** by counter-clockwise.



5 mm hex key wrench

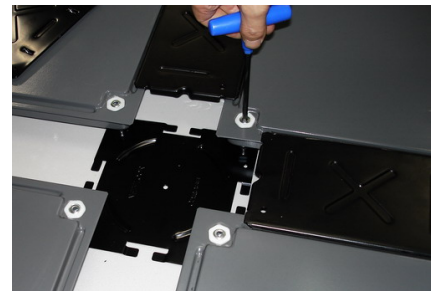
Step 2: To adjust height from top Use the 4 mm hex key wrench, Stretch trough the **Set-Screw**, Insert at hex hole at top of the Pedestal, then adjust height.



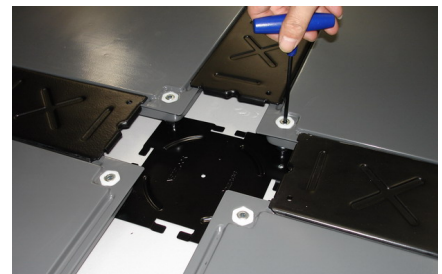
4 mm hex key wrench

Step 3: To fasten

After Step 2 height adjustment, apply the 5 mm hex key wrench to lock by clockwise.

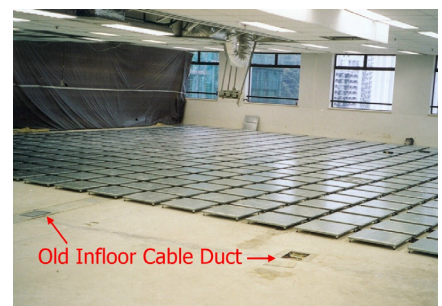


Step 1 and 3: to loose and lock Socket Set Screw from above



Step 2: to adjust height from top

CS1000A-40 to install at 40 mm high
35 mm clearance within Cable Trenches



Renovation jobs: Installing on the old, embed floor trunkings



CamassCrete

CS1000A

Cable Routing and Extension

The grid-pattern cable trench system provides systematic, easy routing and extension of cables. The trench caps to cover the cable trenches shall be installed before or after routing of cables. As all UniPanels are self-standing, lifting or replacing of trench caps are safe, convenient and without resorting to special tools.

Cable Influx and routing

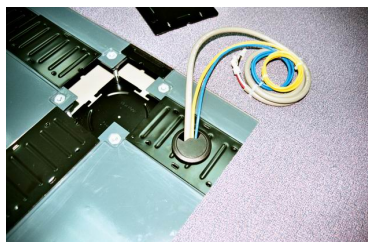
In case of extra large inflow, cable may enter through the reserved space under the UniPanel. Then, distribute through the reticulated Cable Trenches in good order.

Cable extension

Exit-cap: Cables extend through **Exit-Cap** (Flank Cap with 60 mm diameter opening) and connect at wall base, half-height or full-height partition, desk top, and etc.



Exit-Cap



Cables extending from Cable Trenches to wallbase, desktop, any point of the workstation



SB603 Outlet Service Box

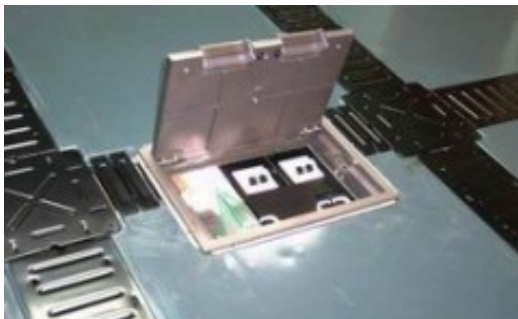
Installing at the Cable Trenches

Using for 60 mm height and higher: Netfloor outlet service box **SB603** Installed at Cable Trench by replacing one Flank Cap. **SB603** accommodates 2 power sockets and 3 data jacks.



Large outlet box:

To accommodate larger size outlet box, Outlet-Panel is custom-made by cutting partial of UniPanel at required size (count in the 90 mm width at Cable Trench) to fix at all internationally recognized brand's as Britmac, Spider, AMP, and etc.



To accommodate large size floor box - Cut at side of the panel (count in the Cable Trench width) and installed at the trench.



CamassCrete installed in education institute and library. Accommodate all types international brands' floor box.



Ramp and Skirting

Ramp: Steel ramp is available in heights 4, 5, 6, 7.6 and 10 cm. Length of ramp is min.12 times to the floor height.

Skirting: Letter F-shape aluminum skirting is available in 6 standard heights 4, 5, 6, 7.6 and 10 cm.

Ramp Rail: Aluminum Ramp Rail to Install horizontally at adjacent line of UniPanel and Ramp.



Specifications

System: Netfloor CamassCrete CS1000A series

1. Module Set:

1.1 Module size: 600 mm x 600 mm (23.62" x 23.62") =
1 UniPanel + 1 Base Connector + 1 Central Cap + 4 Flank Caps.

1.2 System height:

1.2.1 Super Low-Profile: 40 mm ~ 60 mm (1.57"~2.36") height adjustable

1.2.2 Low-Profile: 76 mm (3") ~ 150 mm (6") height adjustable

1.3 System weight: 36 kg / per sq. meter

2. Main Components:

2.1 UniPanel (Main Panel)

Size: 510 mm x 510 mm (20.07" x 20.07")

Grooves: at four side of panel top, width 5 mm, length 410 mm, depth 8 mm.

Top plate and bottom plate of panel: steel, corrosion protection with powder coating.

Panel body in-filled with light weight cement.

Pedestals: Galvanized steel, fixed at four corners. Assembled to system's required height.

2.2 Base Connector: steel, corrosion protection by powder coating or electro-deposition.

2.3 Central Cap: steel, thickness 2.3 mm, corrosion protection by powder coating or electro-deposition.

2.4 Flank Cap: steel, thickness 2 mm, corrosion protection by powder coating or electro-deposition, ribs reinforced, 8 mm bent at flange to form a L-shape, bent flanges sealed by u-shape PVC trim to eliminate noise when contacting at grooves of the UniPanel,

3. Cable Trench Capacity

3.1 Inside width: 110 mm (4.33")

3.2 Cable Trench opening width: 90 mm (3.54")

3.3 Cable Trench clearance: system height minus 5 mm

3.4 Cable capacity under UniPanel (main panel): system height minus 28 mm.

4. Loading Property: UniPanel, in accordance with ASTM E-196

4.1 Concentration Load:

by 1 inch diameter indenter

300 kg < 2.0 mm depression (660 LB < 2.0 mm depression)

4.2 Concentration Ultimate Load:

by 1 inch diameter indenter

greater than 900 kg (> 1,980 LB)

4.3 Uniform Ultimate Load: greater than 50 psi

5. Flammability: Non-combustible. Meet BS476, part 4, ASTM E-84 class 1.

6. Surface Floor Covering: Commercial rate carpet tile, or vinyl tile of more than 4.5 mm thick are standard surface flooring on top of the system.

7. Warranty: 5 years limited warranty.

In pursuing quality improvement, the manufacturer reserves the right to vary specifications without prior notice.





Vocational Education Institute, Hong Kong

Patent Granted
CamassCrete System



USA: Invention Patent No. 5,626,157
 Germany: Utility Model No. 201 06 806.0
 Netherlands: Patent No. 1017802
 Russia: Invention Patent No. 22168
 U.K.: GB2373796 96
 China: Utility Model No. ZL01.2 08101.9
 Japan: Utility Model No. 3082164
 Taiwan: Invention Patent No. 125767
 South Africa: Patent No. 2001/5947

Patent Granted
Set-Screw-Locking system

China: Utility Model No. ZL03260894.2
 Taiwan: Invention Patent No. M241460

USA patent apply No: 101653.881
 --- world-wide patent pending ---

----- www.net-floor.biz -----

Copyright Netfloor, Inc.
 Printed Mar. 2007



CamassCrete

CS1000A